



SOUTH TEXAS
COLLEGE



SOUTH TEXAS COLLEGE BUDGET FISCAL YEAR 2016 - 2017

SERVING HIDALGO COUNTY AND STARR COUNTY, TEXAS



South Texas College Budget

Fiscal Year 2016-2017



**SOUTH TEXAS
COLLEGE**

Hidalgo County and Starr County, Texas

South Texas College Budget For The Fiscal Year Ending August 31, 2017

TABLE OF CONTENTS

INTRODUCTORY SECTION

Board of Trustees and President	1-3
Comprehensive Mission: Vision, Purpose, Core Values, Guiding Principles & Strategic Directions	4
Fact Sheet 2016-2017	5
Programs of Study 2016-2017	6
Summary of Fall Semester Headcount, Unduplicated Annual Headcount and Annual Full Time Equivalent (FTE)	7
Summary of Revenues and Transfers and Expenditures, Transfers and Reserves by Fund - Current and Plant Funds	8

UNRESTRICTED FUND REVENUES

Revenues by Source - Pie Chart.....	10
Revenues by Source - Comparison of Previous Fiscal Year with Fiscal Year Ending August 31, 2017 - Pie Chart	11
Summary of Revenues - Budget and Actual - Comparison of Previous Fiscal Years with Fiscal Year Ending August 31, 2017	12

UNRESTRICTED FUND EXPENDITURES

Expenditures by Function (Without Transfers and Reserves) - Pie Chart	14
Expenditures by Function - Comparison of Previous Fiscal Year with Fiscal Year Ending August 31, 2017 - Pie Chart	15
Expenditures by Classification (Without Transfers and Reserves) - Pie Chart	16
Expenditures by Classification - Comparison of Previous Fiscal Year with Fiscal Year Ending August 31, 2017 - Pie Chart	17
Summary of Expenditures by Function and Classification	18-19

UNRESTRICTED FUND CAPITAL EXPENDITURES

Summary of Capital Expenditures by Function and Organization	21
--	----

AUXILIARY FUND

Summary of Revenues, Expenditures and Transfers - Budget and Actual - Comparison of Previous Fiscal Years with Fiscal Year Ending August 31, 2017	23
--	----

South Texas College
Budget
For The Fiscal Year Ending August 31, 2017

TABLE OF CONTENTS *(Continued)*

RESTRICTED FUND

Summary of Revenues, Expenditures and Transfers - Budget and Actual - Comparison of Previous
Fiscal Years with Fiscal Year Ending August 31, 2017 25

ENDOWMENT FUND

Summary of Revenues, Expenditures and Transfers – Budget and Actual - Comparison of Previous
Fiscal Years with Fiscal Year Ending August 31, 2017 27

PLANT FUNDS

Summary of Revenues, Expenditures and Transfers 29

RESOLUTION

Resolution Adopting the Budget of South Texas College for the Fiscal Year 2016-201731-32

Introductory Section

South Texas College
Budget
For the Fiscal Year Ending August 31, 2017

Board of Trustees and President

DR. ALEJO SALINAS, JR.
CHAIR



Clinical Lecturer, University of Texas-Pan American
Retired Superintendent/Superintendent Emeritus, Hidalgo ISD
District 5
Representing Northwest Hidalgo County, Edinburg, North San Juan, and
Northeast Pharr
First Term: May 1996 – May 2002
Second Term: May 2002 – May 2008
Third Term: May 2008 – May 2014
Fourth Term: May 2014 – May 2020
Serves as Chair of the Board, Chair of the Finance & Human Resources
Committee, member of the Education and Workforce Innovation Committee, and
member of the Facilities Committee.
Formerly served as Vice Chair of the Board, Chair and member of the Facilities
Committee, Chair and member of the Education and Workforce Development
Committee, and member of the Finance & Human Resources Committee.

GRACIELA FARIAS
VICE CHAIR



Self-Employed Educational Consultant
Retired from McAllen Independent School District
District 2
Representing La Joya, Western Mission, Palmview, Sullivan City, Penitas, and
Western Alton
First Term: May 2012 – May 2018
Serves as Vice Chair of the Board, Chair of the Education and Workforce
Development Committee, and member of the Facilities Committee.
Formerly served as Secretary of the Board and member of the Education and
Workforce Development Committee.

JESSE VILLARREAL
SECRETARY



Parental Involvement Specialist, Weslaco ISD
District 6
Representing Donna, South Alamo, South San Juan, Southeast Pharr, South
Weslaco, and Progreso
First Term: May 2000 – May 2006
Second Term: May 2006 – May 2012
Third Term: May 2012 – May 2018
Serves as Secretary of the Board and member of the Facilities Committee.
Formerly served as Vice Chair and Secretary of the Board, and member of the
Facilities Committee.

South Texas College
Budget
For the Fiscal Year Ending August 31, 2017

Board of Trustees and President

ROSE BENAVIDEZ
MEMBER



President of Starr County Industrial Foundation
District 1
Representing Starr County
First Term: Nov. 2009 – May 2012
Second Term: May 2012 – May 2018
Serves as member of the Finance & Human Resources Committee and member of the Facilities Committee.
Formerly served as Chair and Vice Chair of the Board, member of the Facilities Committee, and member of the Finance & Human Resources Committee.

PAUL R. RODRIGUEZ
MEMBER



CEO of Valley Land Title Co.
District 3
Representing South McAllen, Southwest Pharr, Hidalgo, Sharyland, Southeast Mission, and Granjeno
First Term: August 2012 – May 2016
Second Term: May 2016 – May 2022
Serves as member of the Finance & Human Resources Committee and member of the Facilities Committee.
Formerly served as member of the Finance & Human Resources Committee.

GARY GURWITZ
MEMBER



Managing Partner, Atlas, Hall & Rodriguez, L.L.P., McAllen
District 4
Representing North McAllen, Northwest Pharr, Palmhurst, Northeast Mission, and Southwest Edinburg
(Appointed 1993 - 1998)
First Term: May 1998 – May 2004
Second Term: May 2004 – May 2010
Third Term: May 2010 – May 2016
Fourth Term: May 2016 – May 2022
Serves as Chair of the Facilities Committee and member of the Education and Workforce Innovation Committee.
Formerly served as Chair, Vice Chair, and Secretary of the Board, Chair and member of the Facilities Committee, member of the Finance & Human Resources Committee, and member of the Education and Workforce Development Committee.

South Texas College
Budget
For the Fiscal Year Ending August 31, 2017

Board of Trustees and President

ROY DE LEÓN
MEMBER



Branch Retail Executive of BBVA Compass Bank – Mercedes District 7
Representing Northeast Hidalgo County, North Weslaco, Edcouch-Elsa, La Villa, North Mercedes, Northeast Alamo, Northeast Edinburg, and Hargill
(Appointed 1997 - 1998)
First Term: May 1998 – May 2002
Second Term: May 2002 – May 2008
Third Term: May 2008 – May 2014
Fourth Term: May 2014 – May 2020
Serves as member of the Finance & Human Resources Committee and member of the Facilities Committee.
Formerly served as Chair, Vice Chair and Secretary of the Board, Chair and member of the Finance & Human Resources Committee, and member of the Facilities Committee.

DR. SHIRLEY A. REED
PRESIDENT



Founding College President: June 1994 - Present

THE VISION, PURPOSE, CORE VALUES, GUIDING PRINCIPLES, AND STRATEGIC DIRECTIONS CONSTITUTE THE COMPREHENSIVE MISSION for SOUTH TEXAS COLLEGE



VISION STATEMENT

South Texas College is a world-class institution advancing regional prosperity through education for a better quality of life in our community.

PURPOSE STATEMENT

South Texas College is an innovative, public, post-secondary institution providing quality education and career pathways for the people and communities of Hidalgo and Starr counties. The College achieves student success, nurtures talent development, and promotes economic vitality through collaborative and creative approaches to teaching, learning, and support services.

CORE VALUES

1. Student Success: We promote student success and completion through the implementation of diverse strategies and initiatives.
2. Opportunity: We value providing access and opportunities to students to meet the needs of our communities.
3. Excellence: We value excellence in teaching, learning, and all support services.
4. Innovation: We encourage creativity and champion innovative approaches to teaching, learning, and services.
5. Community: We value engaging the community in students' learning experiences and in the positive transformation of our region.
6. Professionalism: We demonstrate professionalism through collegiality, respect, and recognition for each other.
7. Collaboration: We value collaboration and communication among STC employees and STC constituents.
8. Integrity: We value integrity through honest and transparent communication and courageous dialogue.

GUIDING PRINCIPLES

1. South Texas College shares collective responsibility for student learning, student success, and regional prosperity.
2. Students succeed through mutual engagement with the College at each stage of their educational pathways.
3. South Texas College champions innovation through its willingness to transform the College's systems to meet the educational and workforce needs and challenges of our region.
4. Collaboration with educational and business partners is key to student, college, and community successes.

STRATEGIC DIRECTIONS

*(*The development of Strategic Directions incorporated the framework recommended by the American Association of Community Colleges (AACC)'s report Reclaiming the American Dream. The changes recommended by this framework include changing from Fragmented Course-Taking to Clear Pathways, from Low Success Rate to High Success Rate, from Access to Access and Success, from a Culture of Isolation to Collaboration, and from Individual Faculty Prerogative to Collective Responsibility.)*

Clear Pathways

South Texas College provides students with clear pathways to facilitate coherent educational experiences and timely completion of a post-secondary credential leading to relevant employment and/or further educational experiences.

Access and Success

South Texas College is committed to increasing the college-going and college-completing rates in the region.

High Success Rate

South Texas College engages in effective, proven efforts to ensure student success and positively affect the economic and social mobility of residents in our region.

Collective Responsibility

South Texas College empowers faculty to work together within and across disciplines to design best learning experiences for students, leading to their academic success, career readiness, and timely completion.

Collaboration

South Texas College commits to effective interdepartmental and interdivisional collaborations and advances mutually beneficial community and educational partnerships that create a collective impact on student success.

Cost Efficiency

South Texas College seeks innovative redesign of college processes to promote new approaches to cost-consciousness and cost-efficiency.





SOUTH TEXAS COLLEGE



FACT SHEET

ABOUT

Founded in 1993, South Texas College is accredited by the Commission on Colleges of the Southern Association of Colleges and Schools to award baccalaureate and associate degrees. More than 34,000 students attend STC, and a faculty and staff of more than 1,600 serve STC's five state-of-the-art campuses, two teaching centers and one virtual campus.

CREATION

South Texas College was created on September 1, 1993, by Texas Senate Bill 251 to serve Hidalgo and Starr counties. A confirmation election, held on August 12, 1995, established a taxing district for the college. Seven districts, based on population, were also approved for single-member representation on the Board of Trustees. A community leader from each of the seven districts was originally appointed by Governor Ann Richards to serve on the founding Board of Trustees. Since then, elections have been held for all of the seats, and all members have been elected as of May 2002.

DUAL ENROLLMENT

South Texas College is a model of collaboration with public schools and has one of the largest dual enrollment programs in the state of Texas. A variety of dual enrollment programs have been instituted, including five academies, drop-out recovery programs and other unique initiatives with 24 school districts, and over 78 high school sites throughout Hidalgo and Starr counties. The programs allow eligible students to take college courses while attending high school. Combined, over 15,000 students are currently enrolled in these programs. Since 2003, South Texas College has provided tuition-free dual enrollment to over 91,000 students; saving families over \$100 million.

In addition, South Texas College leads the nation in the number of Early College High School partnerships developed with area Independent School Districts. This includes 28 Early College High Schools and two Career and Technical Early College High Schools.

CONTINUING, PROFESSIONAL & WORKFORCE EDUCATION

The program provides opportunities for lifelong learners who want to upgrade their skills, change careers, renew licenses and certifications, or seek personal enrichment. There is a wide variety of course offerings including online classes. Additionally the division also offers customized training to area businesses, industries and the community. Training programs are tailored to a client's specific needs in terms of content, schedule and location.

ARTICULATION AGREEMENTS

For those students who wish to continue their education beyond an associate's degree, STC has more than 60 articulation agreements in place with colleges across the country.

ACCREDITATION

South Texas College is accredited by the Southern Association of Colleges and Schools Commission on Colleges to award the Baccalaureate and Associate degrees. Contact the Commission on Colleges at 1866 Southern Lane, Decatur, Georgia 30033-4097 or call 404-679-4500 for questions about the accreditation of South Texas College.

South Texas College's offerings are approved by the Texas Higher Education Coordinating Board and the Texas Education Agency.

ASSOCIATE DEGREES AND CERTIFICATES

The college offers more than 119 degree and certificate program options, including associate degrees in a variety of art, science, technology and allied health fields of study. The college also offers 18 online associate degrees and certificates options through South Texas College Online.

BACCALAUREATE DEGREES

South Texas College offers Bachelor of Applied Technology degrees in Technology Management, Computer and Information Technologies and Medical and Health Services Management. A new Bachelor of Applied Science in Organizational Leadership is now also offered. South Texas College is proud to be one of three community colleges in the state of Texas accredited to offer Bachelor of Applied Technology degrees.

SOUTH TEXAS COLLEGE ONLINE

Through South Texas College Online, students have access to more than 500 online course sections, full online library services, registration, advising, counseling, payment services, financial aid, bookstore, testing and so much more. Currently, 18 associate degrees, 8 certificates and all four bachelor programs are available online, making it possible for students to earn their degrees without ever setting foot on campus.

INDUSTRY TRAINING & ECONOMIC DEVELOPMENT

South Texas College is the fiscal agent and home of the executive offices for the North American Advanced Manufacturing Research and Education Initiative (NAAMREI). In addition, the Institute for Advanced Manufacturing (IAM) is linked to all community and technical colleges in the region. South Texas College has taken the lead in helping train workers to fuel a regional manufacturing economy and to support innovations in rapid response manufacturing.

ADA COMPLIANCE

In accordance with the Americans with Disabilities Act of 1990, Title IX of the Education Amendment of 1972, and Section 504 of the Vocational Rehabilitation Act of 1973, South Texas College provides accommodations as required by law to afford equal educational opportunities to all people. For questions about the accreditation of South Texas College, contact the Commission on Colleges at (404) 679-4500.

LOCATIONS

Pecan Campus
McAllen, TX

Mid-Valley Campus
Weslaco, TX

Starr County Campus
Rio Grande City, TX

Technology Campus
McAllen, TX

**Dr. Ramiro R. Casso
Nursing & Allied Health
Campus**
McAllen, TX

PRESIDENT

Shirley A. Reed
M.B.A., Ed.D

BOARD OF TRUSTEES

Dr. Alejo Salinas, Jr.
Chair

Graciela Farias
Vice Chair

Jesse Villareal
Secretary

Rose Benavidez
Member

Paul R. Rodriguez
Member

Gary Gurwitz
Member

Roy de León
Member

BUSINESS & TECHNOLOGY

ASSOCIATE OF ARTS DEGREE

Field of Study

Business Administration – Transfer Plan

ASSOCIATE OF APPLIED SCIENCE DEGREES

Advanced Manufacturing Technology

Precision Manufacturing Technology

Automotive Technology

Specialization: GM-ASEP

Architectural and Engineering Design Technology

Specializations: Architectural and Civil Engineering Technology

Architectural and Visual Technology

Business Administration

Specializations: Accounting
Import/Export/Logistics
Management
Marketing

Computer & Advanced Technologies

Specializations: Computer Maintenance Technology
Computer Support and
Telecommunication Specialist

Construction Supervision

Culinary Arts

Diesel Technology

Electrician Technology

Fire Science

Fire Science Technology

Heating, Ventilation, Air Conditioning

& Refrigeration Technology

Human Resources

Human Resources Specialist

Information Technology

Specializations: Computer Specialist
Digital Forensics Specialist
Networking Specialist

Law Enforcement

Office Administration

Administrative Office Assistant
Legal Office Assistant

Paralegal

Welding**

CERTIFICATES

Advanced Manufacturing Technology

Precision Manufacturing Technology
Fast Start Precision Manufacturing Technology

Architectural and Engineering Design Technology

Architectural and Civil Engineering Technology
Architectural and Engineering Design Technology
Architectural and Visual Technology

Automotive Technology

Automotive Technology
Ford Youth and Adult Training Program

Business Administration

Accounting Clerk
Import/Export
Logistics
Management
Marketing

Computer & Advanced Technologies

Cloud Computing and Virtualization Specialist
Computer and Internet Specialist
Computer Maintenance Specialist
Mechatronics Technology Specialist
Telecommunication Support Specialist
Voice and Data Technician

Construction Supervision Assistant

Culinary Arts

Commercial Baking
Commercial Cooking

Diesel Technology

Electrician Assistant

Fire Science

Basic Firefighter

**Heating, Ventilation, Air Conditioning
& Refrigeration Technology**

Human Resources

Employee and Labor Relations Assistant
Human Resource Assistant
Payroll Assistant
Recruiter Assistant

Information Technology

Computer and Information Technologies Specialist
Computer and Network Specialist
Computer Applications Specialist
Cybersecurity/Digital Forensics Specialist
Multimedia Specialist

Law Enforcement

Basic Peace Officer

Office Administration

Legal Office Specialist
Office Specialist

Welding

Combination Welding
Structural Welding

LIBERAL ARTS & SOCIAL SCIENCES

ASSOCIATE OF ARTS DEGREES

Fields of Study

Fine and Performing Arts--

Drama

Graphic Arts

Music

Visual Arts

Humanities--

English

History

Interdisciplinary Studies

Language and Cultural Studies

Concentrations: American Sign Language
Spanish

Mexican-American Studies

Philosophy

Social and Behavioral Sciences--

Anthropology

Communication

Concentrations: Advertising/Public Relations
Communication Studies

Criminal Justice

Kinesiology

Political Science

Psychology

Social Work

Sociology

ASSOCIATE OF ARTS IN TEACHING

Fields of Study

EC-6 Generalist

4-8 Generalist

Grades 8-12

ASSOCIATE OF APPLIED SCIENCE DEGREES

Social and Behavioral Sciences--

American Sign Language and Interpreter Studies

Specializations: Deaf Support Specialist
Sign Language Interpreter

Child Development

Public Administration

CERTIFICATES

Child Development

Specializations: Administration of Early Childhood Programs
Infant and Toddler
Pre-School

Trilingual Interpreter (Enhanced Skills Certificate)

MATH, SCIENCE & BACHELOR PROGRAMS

ASSOCIATE OF SCIENCE DEGREES

Fields of Study

Biology

Chemistry

Computer Information Systems

Computer Science

Engineering

Mathematics

Physics

Pre-Pharmacy

BACCALAUREATE DEGREES

Bachelor of Applied Science in:

Organizational Leadership

Bachelor of Applied Technology in:

Computer and Information Technologies

Medical and Health Services Management

Technology Management

NURSING & ALLIED HEALTH

ASSOCIATE OF APPLIED SCIENCE DEGREES

SELECTIVE PROGRAMS

Emergency Medical Technology

Emergency Medical Technology-Paramedic

Health and Medical Administrative Services

Health Information Technology

Medical Assistant Technology

Pharmacy Technology

SELECTIVE PROGRAMS-COMPETITIVE ENTRY

Associate Degree Nursing

EMT Paramedic to RN

LVN-RN Transition

Occupational Therapy Assistant

Physical Therapist Assistant

Radiologic Technology

Respiratory Therapy

CERTIFICATES

SELECTIVE PROGRAMS

Emergency Medical Technology

Emergency Medical Technology-Basic

Emergency Medical Technology-Intermediate

Emergency Medical Technology-Paramedic*

Health and Medical Administrative Services

Electronic Health Record Specialist

Medical Coding Specialist

Medical Information/Transcription Specialist

Medical Assistant Technology

Medical Office Specialist

Patient Care Assistant

Pharmacy Technology

SELECTIVE PROGRAMS-COMPETITIVE ENTRY

Radiologic Technology

Diagnostic Medical Sonography (Advanced Technical Certificate)

Vocational Nursing

* This is a two-year certificate

** Pending approval from the Texas Higher Education
Coordinating Board and Southern Association of
Colleges and Schools Commission on Colleges

For the 2016-2017 academic year STC has 119 degrees and certificates available to its students: 4 Baccalaureate degrees, one Associate of Arts Degree in 19 fields of study, one Associate of Arts in Teaching in 3 fields of study, one Associate of Science Degree in 8 fields of study, 30 Associate of Applied Science Degrees, and 55 Certificates.

SouthTexasCollege.edu

1-800-742-7822

South Texas College

Summary of Fall Semester Headcount, Unduplicated Annual Headcount and Annual Full Time Equivalent (FTE)

Academic Year	Fall Semester Headcount	Unduplicated Annual Headcount	Annual FTE
1993 - 94	1,055	2,719	1,318
1994 - 95	2,227	4,720	2,221
1995 - 96	3,254	6,893	3,087
1996 - 97	5,416	9,756	4,696
1997 - 98	6,849	11,861	5,737
1998 - 99	9,598	14,391	7,572
1999 - 00	10,364	15,214	7,901
2000 - 01	11,183	16,793	8,343
2001 - 02	12,443	18,357	9,275
2002 - 03	13,691	20,447	10,173
2003 - 04	15,228	21,927	10,529
2004 - 05	17,035	23,847	11,384
2005 - 06	16,233	23,594	11,147
2006 - 07	18,460	25,423	11,675
2007 - 08	19,808	27,940	12,805
2008 - 09	21,666	30,734	14,162
2009 - 10	26,368	36,169	17,918
2010 - 11	28,006	36,951	18,708
2011 - 12	29,513	38,900	18,747
2012 - 13	29,812	40,009	19,230
2013 - 14	30,246	40,458	19,509
2014 - 15	30,881	42,079	19,773
2015 - 16	34,065	46,129	21,536
2016 - 17*	36,218		

* Projected

South Texas College
Current & Plant Funds
Summary of Revenues and Transfers and Expenditures,
Transfers and Reserves by Fund

Budget for Fiscal Year 2016 - 2017

Fund	Revenues and Transfers*	Expenditures, Transfers and Reserves
Unrestricted Fund	\$ 179,711,050	\$ 179,711,050
Auxiliary Fund	\$ 2,087,848	\$ 2,087,848
Restricted Fund	\$ 74,594,336	\$ 74,594,336
Endowment Fund	\$ 1,833	\$ 1,833
Plant Fund - Unexpended - Construction	\$ 136,276,514	\$ 136,276,514
Plant Fund - Renewals & Replacements	\$ 4,802,050	\$ 4,802,050
Plant Fund - Retirement of Indebtedness	\$ 18,563,779	\$ 18,563,779

* Amounts may include Fund Balance (Carryover).

Unrestricted Fund Revenues



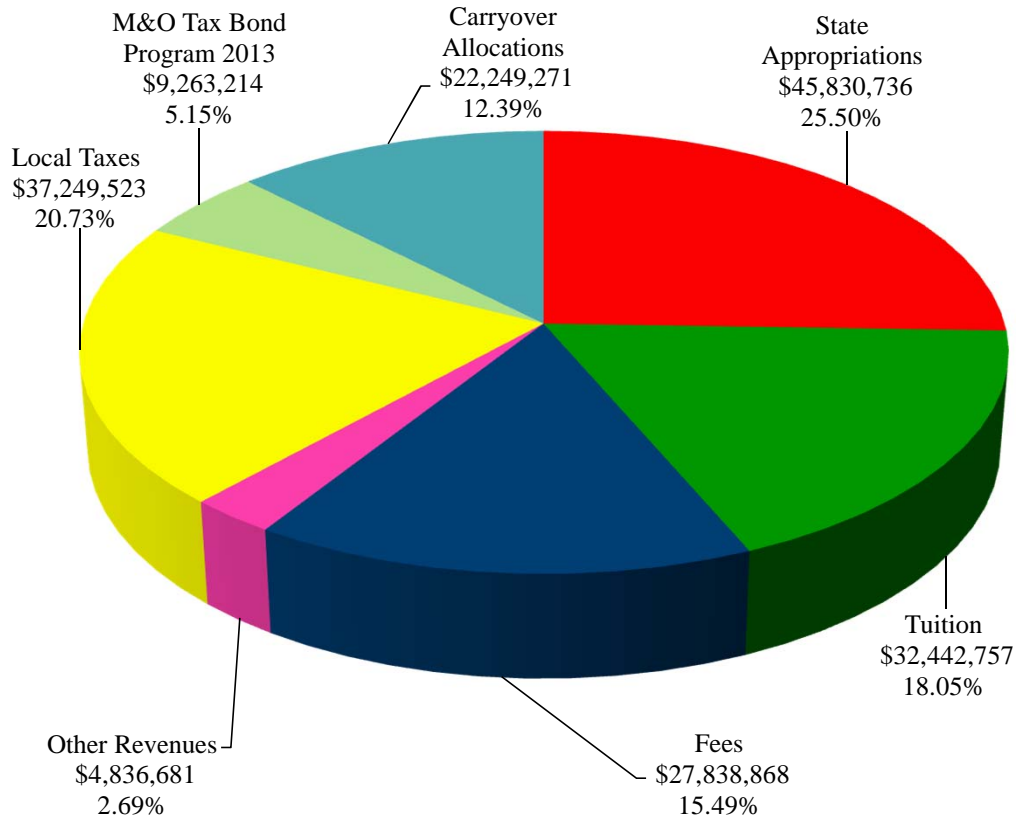
SOUTH TEXAS COLLEGE

This page intentionally left blank.

South Texas College Unrestricted Fund Revenues by Source

Budget for Fiscal Year 2016 - 2017

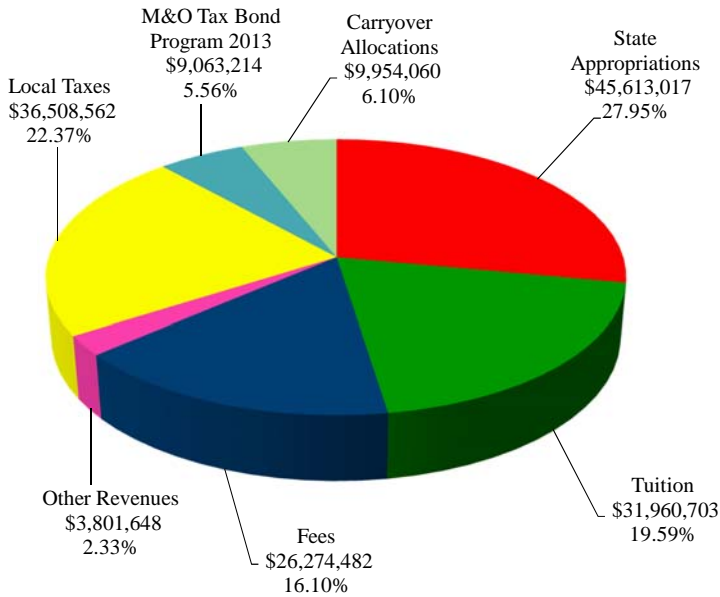
Source of Revenues	FY '17 Budget	Percentage
State Appropriations	\$ 45,830,736	25.50%
Tuition	32,442,757	18.05%
Fees	27,838,868	15.49%
Other Revenues	4,836,681	2.69%
Local Taxes	37,249,523	20.73%
M&O Tax Bond Program 2013	9,263,214	5.15%
Carryover Allocations	22,249,271	12.39%
Total Revenues	\$ 179,711,050	100.00%



South Texas College Unrestricted Fund Revenues by Source

Comparison of Previous Fiscal Year with Fiscal Year Ending August 31, 2017

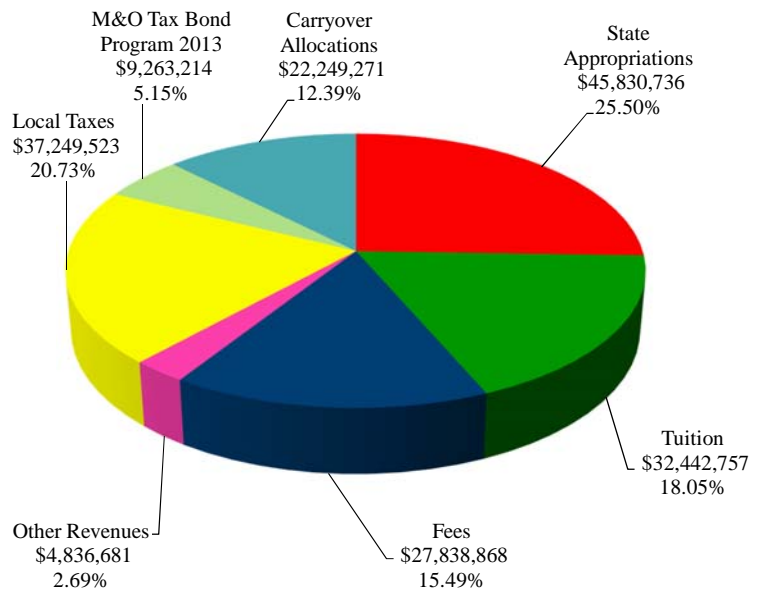
Fiscal Year 2016



Source of Revenues	FY '16 Budget	Percentage
State Appropriations	\$ 45,613,017	27.95%
Tuition	31,960,703	19.59%
Fees	26,274,482	16.10%
Other Revenues	3,801,648	2.33%
Local Taxes	36,508,562	22.37%
M&O Tax Bond Program 2013	9,063,214	5.56%
Carryover Allocations	9,954,060	6.10%
Total Revenues	\$ 163,175,686	100.00%

Fiscal Year 2017

Source of Revenues	FY '17 Budget	Percentage
State Appropriations	\$ 45,830,736	25.50%
Tuition	32,442,757	18.05%
Fees	27,838,868	15.49%
Other Revenues	4,836,681	2.69%
Local Taxes	37,249,523	20.73%
M&O Tax Bond Program 2013	9,263,214	5.15%
Carryover Allocations	22,249,271	12.39%
Total Revenues	\$ 179,711,050	100.00%



South Texas College
Unrestricted Fund
Summary of Revenues - Budget and Actual

Comparison of Previous Fiscal Years with Fiscal Year Ending August 31, 2017

Revenue Source	FY '15 Budget (As Amended)	FY '15 Actual	FY '16 Budget	FY '16 Estimated*	FY '17 Budget
State Appropriations	\$ 42,661,321	\$ 42,465,045	\$ 45,613,017	\$ 45,593,187	\$ 45,830,736
Tuition	30,671,130	29,188,534	31,960,703	31,251,950	32,442,757
Fees	25,600,496	25,744,472	26,274,482	25,559,344	27,838,868
Other Revenues	3,243,620	4,148,585	3,801,648	3,904,648	4,836,681
Local Taxes	35,159,302	35,197,482	36,508,562	36,508,562	37,249,523
M&O Tax Bond Program 2013	8,754,098	8,754,098	9,063,214	9,063,214	9,263,214
Carryover Allocations	12,195,166	12,195,166	9,954,060	9,954,060	22,249,271
Total Unrestricted Fund Revenues	\$ 158,285,133	\$ 157,693,382	\$ 163,175,686	\$ 161,834,965	\$ 179,711,050

* Amounts are estimated. Actual amounts will be available after fiscal year end and completion of audit.

The Unrestricted Fund includes those economic resources of the college which are expendable for the purpose of performing the primary missions of the institution-instruction, research, and public service - and which are not restricted by external sources or designated by the governing board of other than operating expenditures.

Note:

State Appropriations Revenues include state on-behalf benefits which are budgeted in the Unrestricted Fund and are subsequently transferred to the Restricted Fund along with related expenditures for Annual Financial Report purposes.

Unrestricted Fund Expenditures



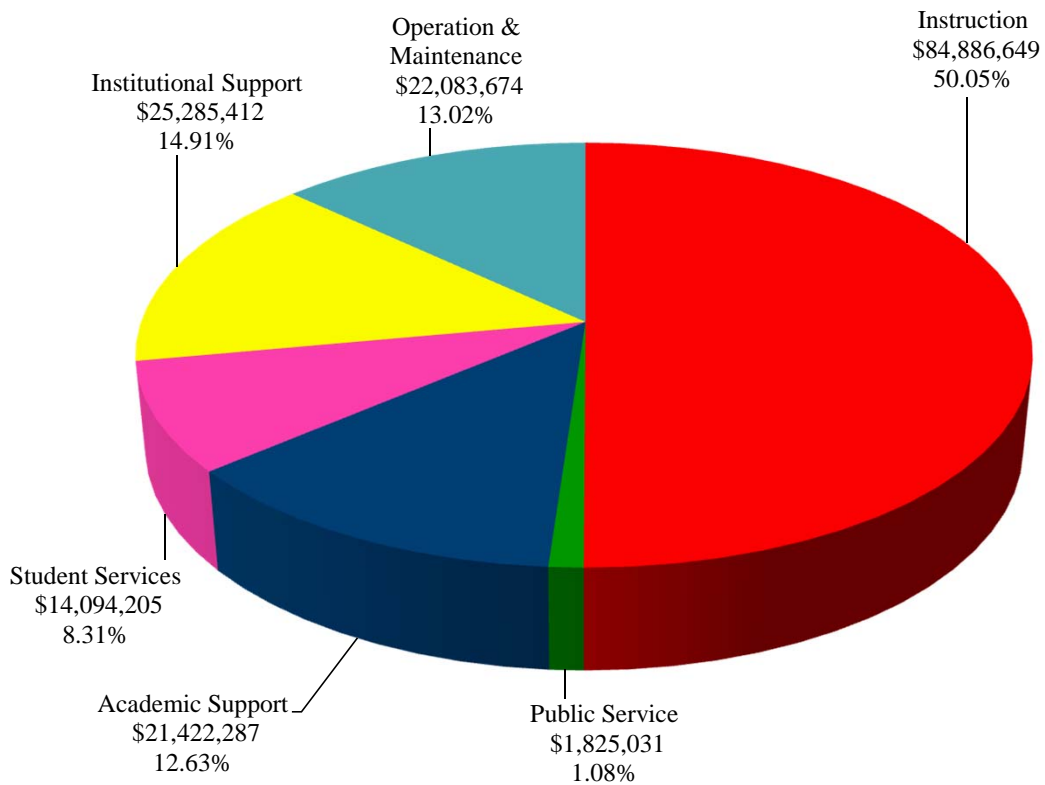
SOUTH TEXAS COLLEGE

This page intentionally left blank.

South Texas College Unrestricted Fund Expenditures by Function (Without Transfers and Reserves)

Budget for Fiscal Year 2016 - 2017

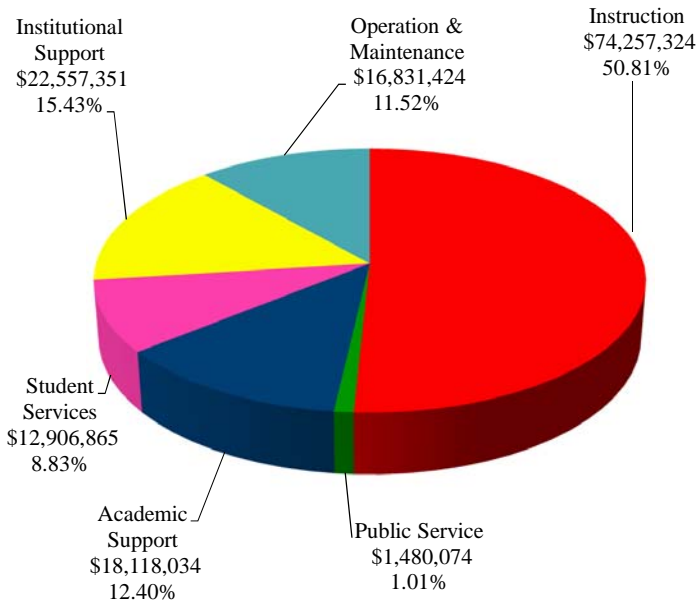
Function	FY '17 Budget	Percentage
Instruction	\$ 84,886,649	50.05%
Public Service	1,825,031	1.08%
Academic Support	21,422,287	12.63%
Student Services	14,094,205	8.31%
Institutional Support	25,285,412	14.91%
Operation & Maintenance	22,083,674	13.02%
Total Expenditures	\$ 169,597,258	100.00%



South Texas College Unrestricted Fund Expenditures by Function (Without Transfers and Reserves)

Comparison of Previous Fiscal Year with Fiscal Year Ending August 31, 2017

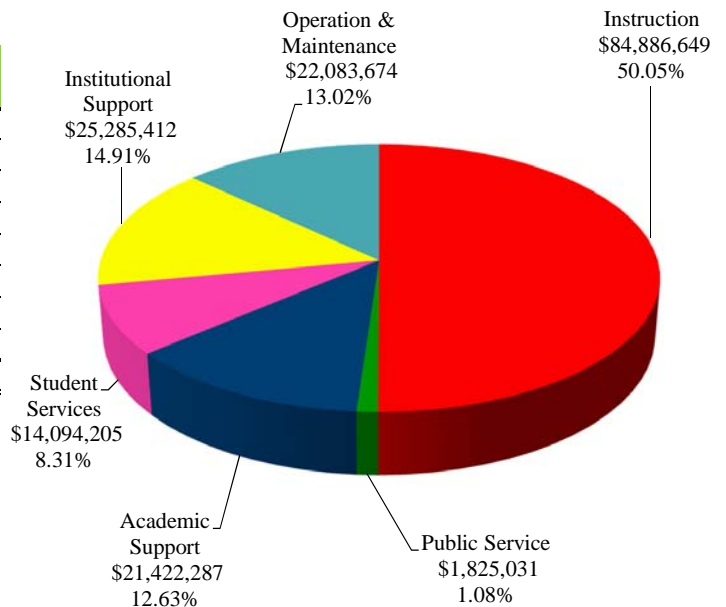
Fiscal Year 2016



Function	FY '16 Budget	Percentage
Instruction	\$ 74,257,324	50.81%
Public Service	1,480,074	1.01%
Academic Support	18,118,034	12.40%
Student Services	12,906,865	8.83%
Institutional Support	22,557,351	15.43%
Operation & Maintenance	16,831,424	11.52%
Total Expenditures	\$ 146,151,072	100.00%

Fiscal Year 2017

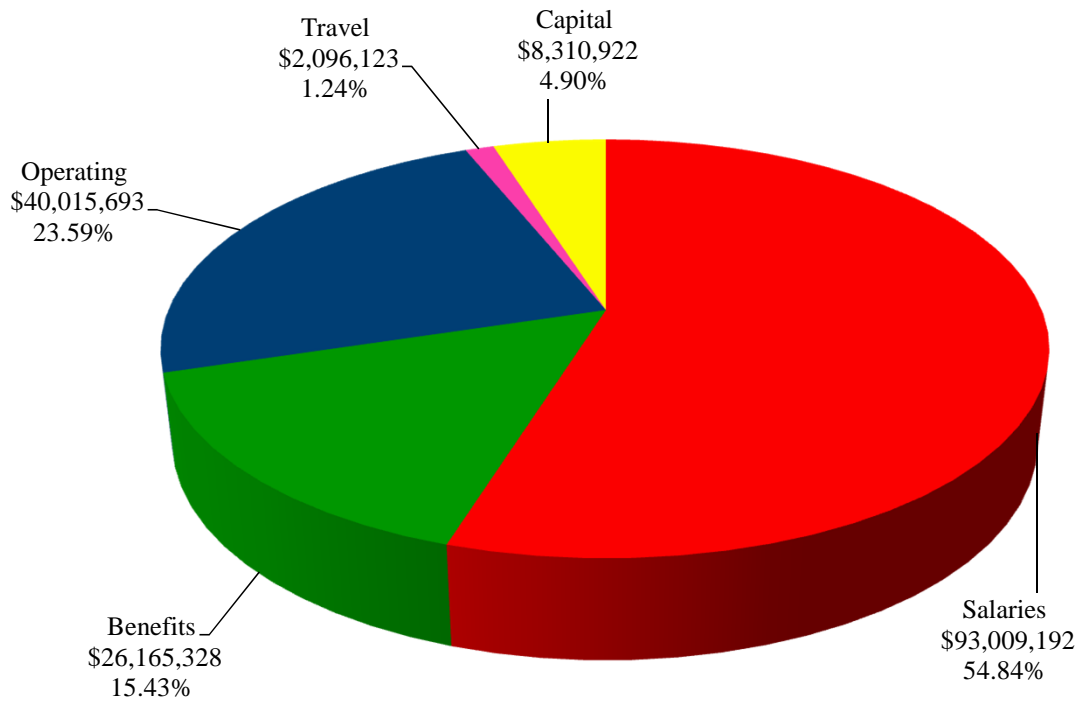
Function	FY '17 Budget	Percentage
Instruction	\$ 84,886,649	50.05%
Public Service	1,825,031	1.08%
Academic Support	21,422,287	12.63%
Student Services	14,094,205	8.31%
Institutional Support	25,285,412	14.91%
Operation & Maintenance	22,083,674	13.02%
Total Expenditures	\$ 169,597,258	100.00%



South Texas College
Unrestricted Fund
Expenditures by Classification
(Without Transfers and Reserves)

Budget for Fiscal Year 2016 - 2017

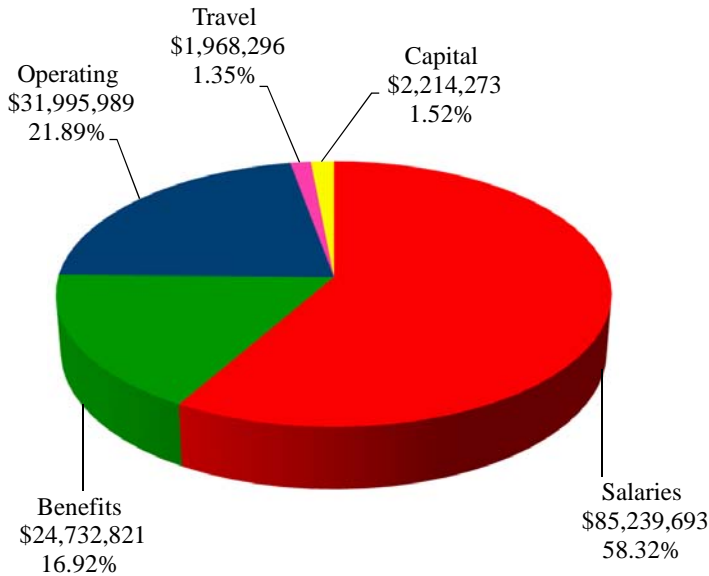
Classification	FY '17 Budget	Percentage
Salaries	\$ 93,009,192	54.84%
Benefits	26,165,328	15.43%
Operating	40,015,693	23.59%
Travel	2,096,123	1.24%
Capital	8,310,922	4.90%
Total Expenditures	\$ 169,597,258	100.00%



South Texas College Unrestricted Fund Expenditures by Classification (Without Transfers and Reserves)

Comparison of Previous Fiscal Year with Fiscal Year Ending August 31, 2017

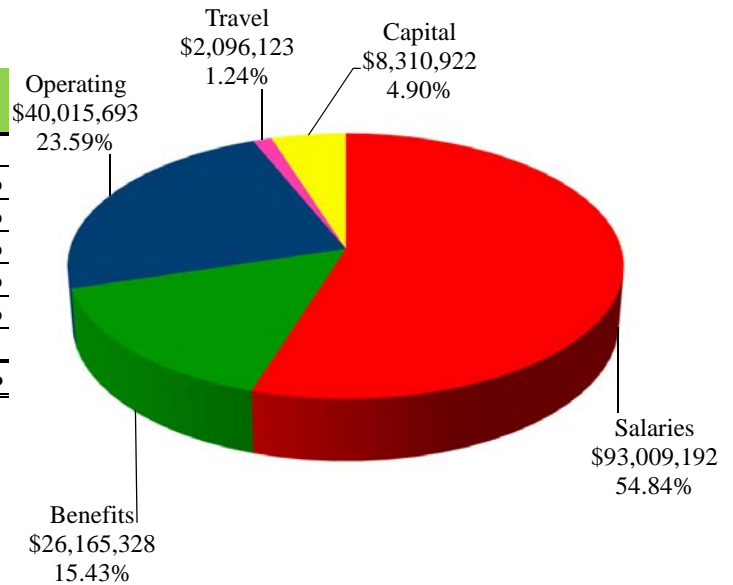
Fiscal Year 2016



Classification	FY '16 Budget	Percentage
Salaries	\$ 85,239,693	58.32%
Benefits	24,732,821	16.92%
Operating	31,995,989	21.89%
Travel	1,968,296	1.35%
Capital	2,214,273	1.52%
Total Expenditures	\$ 146,151,072	100.00%

Fiscal Year 2017

Classification	FY '17 Budget	Percentage
Salaries	\$ 93,009,192	54.84%
Benefits	26,165,328	15.43%
Operating	40,015,693	23.59%
Travel	2,096,123	1.24%
Capital	8,310,922	4.90%
Total Expenditures	\$ 169,597,258	100.00%



South Texas College
Unrestricted Fund
Summary of Expenditures by Function and Classification
Budget for Fiscal Year 2016 - 2017

Function / Classification	Salaries	Percent of Total	Benefits	Percent of Total	Operating	Percent of Total
Instruction	\$ 52,737,906	56.70%	\$ 14,845,154	56.74%	\$ 11,609,889	29.01%
Public Service	494,204	0.53%	57,517	0.22%	1,007,746	2.52%
Academic Support	10,748,364	11.56%	2,814,727	10.76%	6,582,686	16.45%
Student Services	8,763,115	9.42%	2,484,466	9.50%	1,975,434	4.94%
Institutional Support	11,968,823	12.87%	3,482,445	13.31%	9,370,620	23.42%
Operation & Maintenance - Plant	8,296,780	8.92%	2,481,019	9.47%	9,469,318	23.66%
Total - Without Transfers & Reserves	93,009,192	100.00%	26,165,328	100.00%	40,015,693	100.00%
Percent of Total Expenditures Without Transfers & Reserves	54.84%		15.43%		23.59%	
Transfers and Reserves						
Transfer-Construction Fund	-		-		3,000,000	
Transfer-MTR Bond Series 2007	-		-		393,800	
Transfer-NAAMREI/IAM	-		-		564,000	
Contingency	-		-		2,000,000	
Bond Program 2013 Reserve	-		-		4,155,992	
Total Transfers and Reserves	-		-		10,113,792	
Total Unrestricted Budget Expenditures/Transfers/Reserves	\$ 93,009,192		\$ 26,165,328		\$ 50,129,485	
Percent of Total Expenditures With Transfers and Reserves	51.75%		14.56%		27.89%	

South Texas College
Unrestricted Fund
Summary of Expenditures by Function and Classification

Budget for Fiscal Year 2016 - 2017

(Continued)

<u>Travel</u>	<u>Percent of Total</u>	<u>Capital</u>	<u>Percent of Total</u>	<u>Total</u>	<u>Percent of Total Budget W/O Trans/Reserv</u>	<u>Percent of Total Budget With Trans/Reserv</u>
\$ 1,024,767	48.89%	\$ 4,668,933	56.18%	\$ 84,886,649	50.05%	47.24%
32,351	1.54%	233,213	2.81%	1,825,031	1.08%	1.02%
372,876	17.79%	903,634	10.87%	21,422,287	12.63%	11.92%
271,067	12.93%	600,123	7.22%	14,094,205	8.31%	7.84%
311,524	14.86%	152,000	1.83%	25,285,412	14.91%	14.07%
83,538	3.99%	1,753,019	21.09%	22,083,674	13.02%	12.29%
2,096,123	100.00%	8,310,922	100.00%	169,597,258	100.00%	94.38%
1.24%		4.90%		100.00%		
-		-		3,000,000		
-		-		393,800		
-		-		564,000		
-		-		2,000,000		
-		-		4,155,992		
-		-		10,113,792		5.62%
\$ 2,096,123		\$ 8,310,922		\$ 179,711,050		100.00%
1.17%		4.63%		100.00%		



SOUTH TEXAS COLLEGE

This page intentionally left blank.

Unrestricted Fund Capital Expenditures

South Texas College
Unrestricted Fund
Summary of Capital Expenditures by Function and Organization

Budget for Fiscal Year 2017

Organization Name	Organization Code	Total
Instruction		
Distance Ed Instructional Tech	211002	\$ 35,000
Biology	221301	29,472
Radiologic Technology	224011	140,000
Respiratory Therapy	224025	20,000
Diagnostic Sonograph	224031	70,000
Technology-Instruction	Multiple	571,210
FFE - Continuing Education	601140	2,331,000
FFE - LASS	221141	9,000
FFE - BAT / Math & Science	221140	270,605
FFE - Business & Technology	221143	1,050,646
FFE - NAH	221142	142,000
Total Instruction		4,668,933
Public Service		
Technology-Public Service	Multiple	4,213
FFE - IAM	604104	229,000
Total Public Service		233,213
Academic Support		
Curriculum & Student Learning	213001	90,000
Library Acquisition	530002	205,447
BAT and Support Materials	530008	30,912
Inst Tech Maint & Replacement	540008	28,000
Office of Strategic Initiatives	560001	50,000
Technology-Academic Support	Multiple	153,459
FFE - Library, Instrctnl Tech & CLE	534140	345,816
Total Academic Support		903,634
Student Services		
Office of Enrollment Services	320012	450,000
Technology-Student Services	Multiple	140,923
FFE - Student Service	301140	9,200
Total Student Services		600,123
Institutional Support		
Business Office	410013	30,000
FFE - Central Receiving	426140	122,000
Total Institutional Support		152,000
Operation & Maintenance		
Central Receiving	420004	90,000
Dir Fac Planning & Construction	430001	90,000
Custodial	450004	200,000
Facility Maintenance	450006	214,999
STC Police	450051	109,803
Technology-Operation & Maintenance	Multiple	133,195
FFE - Cafeteria	409000	915,022
Total Operation & Maintenance		1,753,019
Total Capital Expenditures		\$ 8,310,922



SOUTH TEXAS COLLEGE

This page intentionally left blank.

Auxiliary Fund

South Texas College
Auxiliary Fund
Summary of Revenues, Expenditures and Transfers - Budget and Actual
Comparison of Previous Fiscal Years with Fiscal Year Ending August 31, 2017

Fiscal Year	Revenues* / Expenditures / Transfers	Budget	Actual**
2014-2015	Revenues	\$ 1,999,026	\$ 1,774,783
	Expenditures and Transfers	\$ 1,999,026	\$ 1,403,408
2015-2016	Revenues	\$ 2,119,070	\$ 2,119,070
	Expenditures and Transfers	\$ 2,119,070	\$ 2,119,070
2016-2017	Revenues	\$ 2,087,848	
	Expenditures and Transfers	\$ 2,087,848	

* Revenues may include Fund Balance (Carryover)

** Projected for Fiscal Year 2016

The *Auxiliary Fund* accounts for transactions of self-supporting activities. The fund exists to provide goods or services to students, faculty, staff, other institutional departments, or incidentally to the general public. The assessed fee is directly related to, although not necessarily equal to, the cost of the goods or services. Examples include the College bookstore, food service, wellness center, child care center and general conferences.



SOUTH TEXAS COLLEGE

This page intentionally left blank.

Restricted Fund

South Texas College
Restricted Fund
Summary of Revenues, Expenditures and Transfers - Budget and Actual
Comparison of Previous Fiscal Years with Fiscal Year Ending August 31, 2017

Fiscal Year	Revenues / Expenditures/Transfers	Budget	Actual*
2014-2015	Revenues and Transfers	\$ 73,797,316	\$ 67,889,574
	Expenditures and Transfers	\$ 73,797,316	\$ 67,343,656
2015-2016	Revenues and Transfers	\$ 78,671,685	\$ 78,671,685
	Expenditures and Transfers	\$ 78,671,685	\$ 78,671,685
2016-2017	Revenues and Transfers	\$ 74,594,336	
	Expenditures and Transfers	\$ 74,594,336	

* Projected for Fiscal Year 2016

The *Restricted Fund* accounts for operating funds that have been restricted for a specific purpose by external parties, grants, contracts, donors, or legislation.



SOUTH TEXAS COLLEGE

This page intentionally left blank.

Endowment Fund

South Texas College
Endowment Fund
Summary of Revenues, Expenditures and Transfers - Budget and Actual
Comparison of Previous Fiscal Years with Fiscal Year Ending August 31, 2017

Fiscal Year	Revenues* / Expenditures / Transfers	Budget	Actual**
2014-2015	Revenues	\$ 87	\$ 254
	Expenditures and Transfers	\$ 87	\$ 254
2015-2016	Revenues	\$ 1,255	\$ 1,280
	Expenditures and Transfers	\$ 1,255	\$ 1,280
2016-2017	Revenues	\$ 1,833	
	Expenditures and Transfers	\$ 1,833	

* Revenues may include Fund Balance (Carryover)

** Projected for Fiscal Year 2016

The *Endowment Fund* accounts for donor restricted gifts that are invested as per the donor's stated terms.



SOUTH TEXAS COLLEGE

This page intentionally left blank.

Plant Funds

South Texas College
Plant Funds
Summary of Revenues, Expenditures and Transfers

Budget for Fiscal Year 2016 - 2017

Fund	Revenues and Transfers*	Expenditures and Transfers
Plant Fund - Unexpended - Construction Fund	\$ 136,276,514	\$ 136,276,514
Plant Fund - Renewals & Replacements Fund	\$ 4,802,050	\$ 4,802,050
Plant Fund - Retirement of Indebtedness Fund	\$ 18,563,779	\$ 18,563,779

*Amounts may include Fund Balance (Carryover).

The *Unexpended - Construction Fund* accounts for resources to be used for plant construction or acquisition.

The *Renewals and Replacements Fund* accounts for resources to be used for renewing and replacing facilities on existing College capital assets.

The *Retirement of Indebtedness Fund* accounts for funds held in reserve for paying principal and interest on debt, as well as related costs in accordance with bond indentures.



SOUTH TEXAS COLLEGE

This page intentionally left blank.

Resolution

A RESOLUTION ADOPTING THE BUDGET OF SOUTH TEXAS COLLEGE FOR THE FISCAL YEAR BEGINNING SEPTEMBER 1, 2016 AND ENDING AUGUST 31, 2017 IN ACCORDANCE WITH THE PROVISIONS OF THE TEXAS EDUCATION CODE AND ORDERING OTHER PROVISIONS RELATED TO THE SUBJECT MATTER HEREOF.

BE IT ORDERED BY THE BOARD OF TRUSTEES OF SOUTH TEXAS COLLEGE, THAT:

SECTION I: The Budget Estimate of revenues for South Texas College District (the "College District") and the expenses of conducting the affairs thereof for the ensuing fiscal year beginning September 1, 2016, and ending August 31, 2017, as submitted by the President of the College, be, and the same is in all things, adopted and approved as the budget of all of the current revenues and expenses for the fiscal year beginning the 1st day of September, 2016, and ending the 31st day of August, 2017.

SECTION II: The amount of ad valorem taxes and revenue from other sources, as estimated by the President, is hereby appropriated out of the various Funds for the payment of operating expenses and capital outlay of the College District. A copy of the Budget Summary indicating such revenues and appropriating their expenditures is attached hereto and made a part hereof for all purposes as Exhibit "A" and shall remain on file in the Office of the President.

SECTION III: The sums indicated in Exhibit "A" are hereby appropriated in the Unrestricted Fund and College's Debt Service Fund out of the current year ad valorem taxes as collected for the purposes of maintenance and operation of the College District, as applicable, and applying the interest due on the general obligation bonds, redeeming the bonds as they mature, and creating sinking funds as required by such bonds.

SECTION IV: All Resolutions or parts of Resolutions in conflict herewith are hereby repealed.

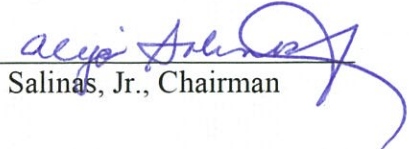
SECTION V: This Resolution shall be and remain in full force and effect as of September 1, 2014.

SECTION VI: If any part, or parts, of this Resolution are found to be invalid or unconstitutional by a court having competent jurisdiction, then such invalidity or unconstitutionality shall not affect the remaining parts hereof and such remaining parts shall remain in full force and effect, and to the extent this Resolution is considered severable.


CONSIDERED, PASSED and APPROVED this 28th day of June, 2016 at a meeting of the Board of Trustees of South Texas College District at which a quorum was present and which was held in accordance with the Texas Government Code Chapter 551.

SIGNED this 28th day of June, 2016.

SOUTH TEXAS COLLEGE DISTRICT

By: 
Alejo Salinas, Jr., Chairman

ATTEST:

By: 
Jesse Villarreal, Secretary